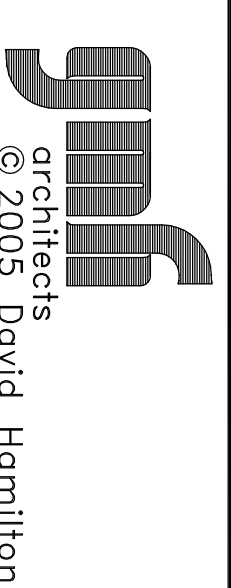
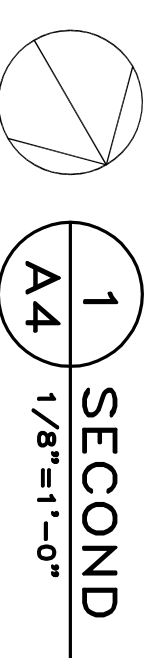
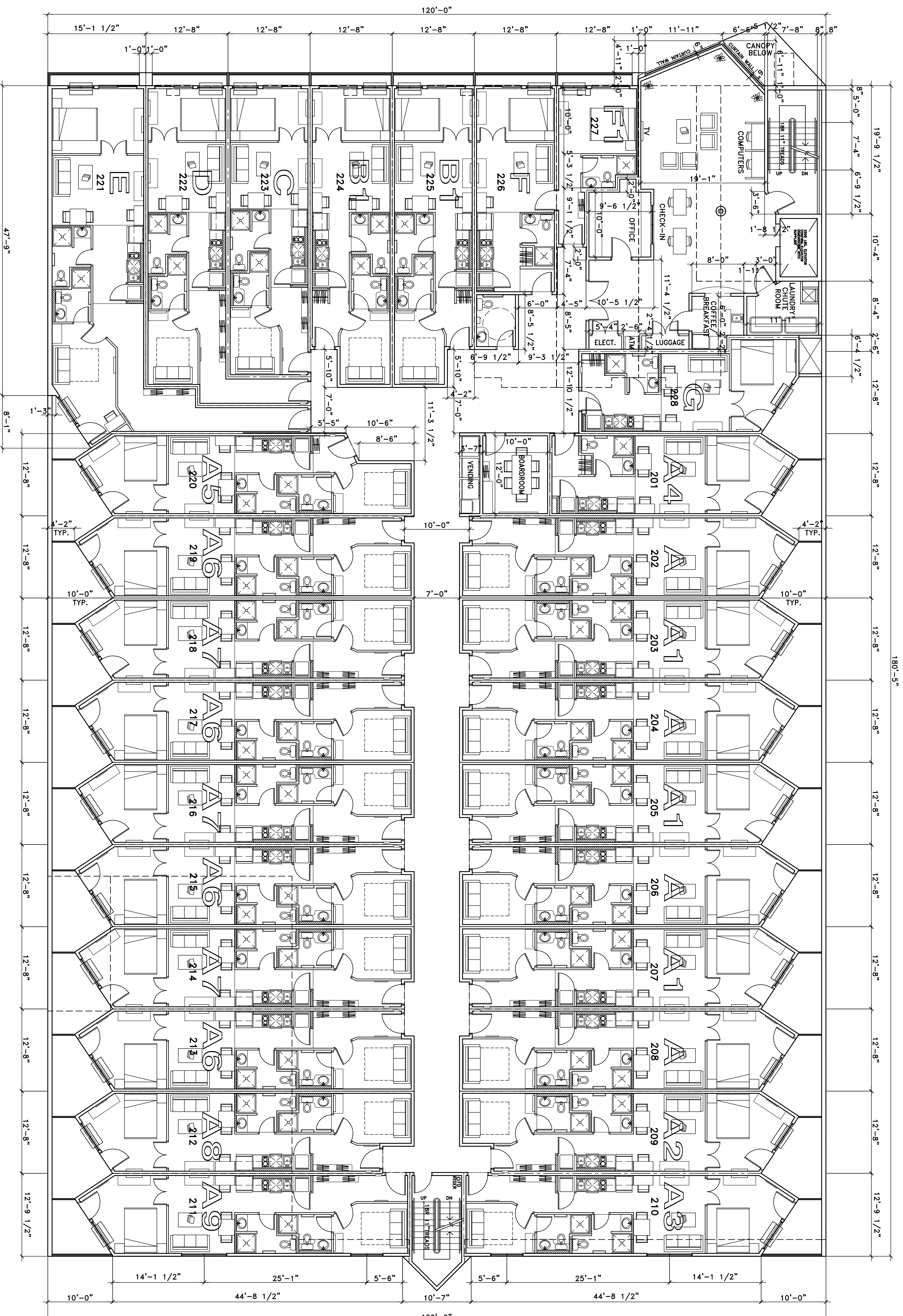
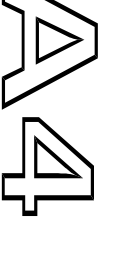


PLATINUM BOUTIQUE HOTEL - FT. MCMURRAY



© 2005 David Hamilton

1847-05-14-09-DM(CONST.SET)



WALL SCHEDULE-1 HR

- EXTERIOR WALL
- EXTERIOR FINISH (SEE ELEVATION)
- BUILDING PAPER
- 3/8" SHEATHING
- 2x6 FRAMING
- R-20 BATT INSULATION
- 5 MIL POLY
- 5/8" TYPE X BOARD
- INTERIOR WALL (NON BEARING-NON RATED)
- 1/2" DRYWALL BOTH SIDES
- 2x4 FRAMING

- CORRIDOR WALLS/STAIR WALLS (BEARING UNLESS NOTED OTHERWISE) (54 STC, ABC W4A)
- 5/8" TYPE X BOARD
- 2x6 STUDS
- 6 PLATES TOP AND BOTTOM
- R20 BATT INSULATION
- RESILIENT BAR (24" CENTRES CORRIDOR SIDE
- 2 LAYERS 1/2" FIREGUARD
- PARTY WALLS (W13a)
- (5) STC, ABC W13a)
- 5/8" TYPE X BOARD
- 2-2x4 WALLS SPACED 1" APART
- 5/8" TYPE X BOARD
- 5/8" TYPE X BOARD

- ELEVATOR WALLS TO SUITE (61 STC, ABC W14d)
- 2 LAYERS 5/8" TYPE X BOARD
- 2-2x4 WALLS SPACED 1" APART
- 2 LAYERS R12 BATT INSULATION
- 5/8" TYPE X BOARD (ELEVATOR SIDE)
- PLUMBING SHAFT WALLS(NON RATED)
- 2x6 OR 2x8 FRAMING
- FILL ALL PLUMBING CAVITIES WITH LOOSE FILL INSULATION

- MECHANICAL ROOM WALLS - 1HR
- 2 LAYERS 5/8" TYPE X BOARD
- 5/8" TYPE X BOARD

DOOR SCHEDULE

- SUITE ENTRY - 20 MIN. SOLID CORE WOOD
- 3 BUTTS, LATCHSET, CLOSER, STOP, DEADBOLT.
- SUITE DOOR - HOLLOW CORE NON-RATED
- 2 BUTTS, LATCHSET (BATHROOM PRIVACY SET)
- MEETING ROOM, LAUNDRY, CORRIDOR STAIRS
- 45 MIN. SOLID CORE WOOD OR HOLLOW METAL
- 3 BUTTS, LATCHSET, CLOSER, STOP
- MECHANICAL, ELECTRICAL, ELEVATOR MACHINE
- 45 MIN. HOLLOW METAL
- 3 BUTTS, LOCKSET, CLOSER, STOP
- STAIR EXITS TO EXTERIOR - INSULATED
- HOLLOW METAL NON RATED
- 3 BUTTS NRP, CLOSER, STORE ROOM LOCKSET (KEYS TO EXTERIOR) WEATHERSTRIP, THRESHOLD

FIRE RESISTANCE SCHEDULE

- SUITE INTERIOR NON BEARING WALLS-COMBUSTIBLE NON RATED
- ALL OTHER WALLS-COMBUSTIBLE 1 HOUR 5/8" TYPE X 40 MINUTE WOOD STUDS 400mm CENTERS 20 MINUTE ABC 97 TABLES D.2.3.4. A AND C
- FLOORS-COMBUSTIBLE 1 HOUR 60 MINUTE T16013-1 WARNOCK HERSEY
- COMBUSTIBLE MATERIAL SHALL NOT PENETRATE RATED MEMBRANES
- PROVIDE FI RATED FIRE STOP CAULKING FOR CONDUIT WIRING AND PIPING
- PENETRATING FRAMING AT FLOOR LINES